



## Yatton Parish Council

Hangstones Pavilion,  
Stowey Road,  
Yatton  
Bristol  
BS49 4HS  
Tel: 01934 838971  
Email: [clerk@yatton-pc.gov.uk](mailto:clerk@yatton-pc.gov.uk)



*OUR MISSION: To ensure the provision of high quality services in our communities of Yatton and Claverham*

---

## Community Governance Review 2025: Consultation Response

Yatton Parish Council discussed the consultation response at a meeting of the Parish Council on the 10<sup>th</sup> March 2025 and approved the following comments for submission to North Somerset Council.

### **Q6. Do you think the name of your parish reflects your community and its identity?**

No, it should be changed (please specify below)

**If you said no, please specify why below. If you have an alternative name suggestion for your parish, you may wish to also use this space to tell us.**

We think that the name of the existing parish should be changed from Yatton to Yatton and Claverham. The reason for this is that Claverham is a significant community in its own right – it even has its own Neighbourhood Development Plan - and ought to be included in the name of the parish.

---

### **Q11. Do you think any changes should be made to the existing wards in your parish/town council? This could include changes to ward boundaries, ward names or the number of councillors per ward.**

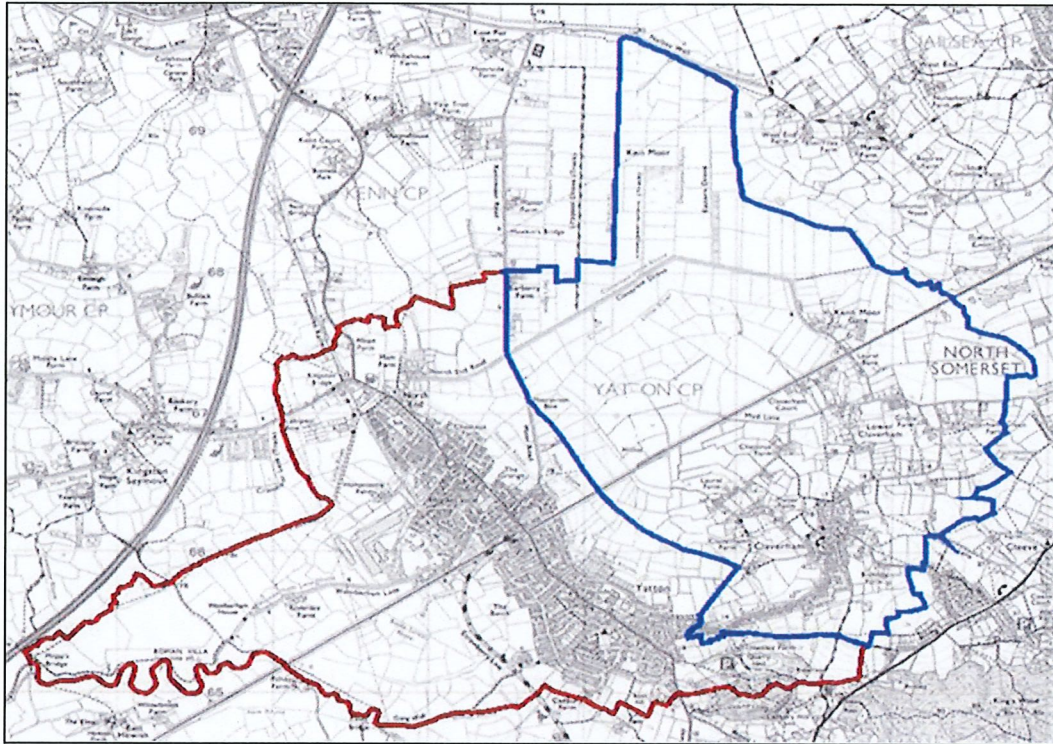
Yes

**If yes, please describe the changes you think should be made. Any maps you have that illustrate these changes can be returned with this questionnaire.**

Yatton Parish is currently divided into four wards: Claverham, South, North, and Horsecastle. These divisions make little geographical or social sense and merely serve to create problems during local elections. In the past we have had to spend money holding an election despite having more vacancies than councillors, simply

because one ward had a surfeit of candidates whilst all others had a dearth. This is an unnecessary waste of resources.

We think the parish should be to split into two wards of Yatton and Claverham using the boundaries in the neighbourhood plans shown in the map below.



---

**Q13. Do you feel that there is a need to group any of the parishes in North Somerset?**

Not as far as Yatton is concerned.

---

**Q14. Do you have any further comments on Stage One of the Community Governance Review?**

In recent months, it has become increasingly difficult to practice good governance at parish level because of difficulties with North Somerset Council. Simple legal matters, predicted to need at most weeks to complete, having actually taken over two years; the Delivering Together project (now to be called Local Devolution) has been characterised by botched communication and inexplicable delays. It has left us in the position of setting a budget on the basis of information that we later – too late – found to be incorrect. Straightforward and obvious questions have not been anticipated or answered.

It is galling to see our high standards compromised by incompetence at local authority level – a local authority that is now reviewing **our** standards of governance. We would like to suggest that the next Good Governance Review involves reviewing up as well as reviewing down. Although, unlike the current review, this is not a legal requirement, it would still be good practice.

# Yatton Parish Council

## West of England Rural Network: Listening to Rural Voices Consultation Response.

At a meeting of Yatton Parish Council on the 10<sup>th</sup> March 2025 the Parish Council resolved to submit the following response to the WERN survey.

### **3. What helps or hinders local people from accessing these services and facilities?**

Yatton Parish consists of two villages, Yatton and Claverham. Yatton has good local services but Claverham is much less fortunate. Neither village has an adequate bus service and the parish as a whole is notably poorly served in this respect.

Other main hindrances are village-specific. Yatton is a long and linear village. This means that it is an appreciable distance from the northern and southern parts to the village centre, making it challenging for the less mobile to access it. More car journeys are created within the village, contributing to congestion and with it noise and air pollution. Another issue for Yatton is the use of its High Street by very large HGVs approximately every two minutes through the working day. This creates a strong perception of danger for pedestrians and cyclists, further deterring them from using these sustainable modes of transport.

For Claverham, its main services are in Yatton and therefore getting to them is even more of a challenge. The footways on Claverham Road are very narrow in places and for much of their length poorly surfaced.

---

### **4. What do you think your area or community needs more of at this time?**

Buses. Yatton is the fifth largest of the forty-three towns and parishes in North Somerset but stands at number forty-two in terms of the availability of bus services. This makes travel difficult for many residents, especially the less mobile and/or more vulnerable.

---

### **5. What do you think are the most pressing concerns for your community or area at this time?**

Pressure on infrastructure, particularly the availability of medical care.

Lack of an adequate bus service.

The use of Yatton High Street by HGVs.

---

**19. What three things do you think your area or community needs most to improve quality of life for residents?**

A good bus service, with continued availability into the evenings and at weekends.

An end to large housing developments that are degrading the village's rural character.

Banning unnecessary HGV journeys along Yatton High Street.

---

**20. What three things do you think make living in your area or community more difficult than it needs to be?**

The desperately poor bus service.

Too much pressure on essential local infrastructure especially medical facilities from continued large housing developments.

Too many HGV journeys along our High Street.

---

**21. How can local services be improved to make them easier for people in your area or community to use?**

A regular, frequent bus service that runs into the evening and at weekends, which sticks to a route and timetable for at least two years at a time.

North Somerset Council releasing land at The Batch in Yatton to allow the doctor's surgery to expand to a size concomitant with the parish's population.

Prevent HGVs from making unnecessary journeys along Yatton High Street.

---

**22. What do you think your organisation or group needs most to help it be sustainable & resilient?**

Sufficient funding to run our services effectively

---

**23. What do you think make running your organisation or group more difficult than it needs to be?**

It is hard to find councillors.

It is hard to influence people/organisations who make decisions that affect what we do or the people we work with: specifically, North Somerset Council.

---

**24. What would make things easier for you to run your organisation or group?**

Our organisation is extremely well run.